



Our Teamwork Makes Community Action Work

2022-2023 ANNUAL IMPACT REPORT

TABLE OF CONTENTS

- 02 Our Mission, Equity Statement, & Promise
- 03 Executive Director Message
- 04 Board Chairman Message
- 05 Board of Directors
- 06 Staff
- 08 Contributors
- 09 Fiscal Year Highlights
- 11 Financial Position & Activities
- 13 Head Start & Early Head Start Budget
- 14 Head Start
- 17 Family Advocacy
- 18 Child Nutrition
- 19 Home Energy
- 22 Community Services
- 24 Employment
- 25 Transportation
- 27 Senior Support
- 28 Congregate Meals
- 29 Office Locations

2022-2023

OUR MISSION

Central Kentucky Community Action Council, Inc. provides services to meet basic needs and to empower vulnerable populations. By increasing self-sufficiency and developing strategies to promote economic independence through partnerships and community resources.

OUR EQUITY STATEMENT

As Central Kentucky Community Action Council, Inc. aims to effectively eradicate the causes and conditions of poverty, we understand that racial inequity rests at the intersection of multiple barriers that impede access to economic security for children, families, and communities.

OUR PROMISE

Central Kentucky Community Action Council changes people's lives, embodies the spirit of hope, improves communities and makes America a better place to live. We care about the entire community, and we are dedicated to helping people help themselves and each other.

EXECUTIVE DIRECTOR MESSAGE

As the year draws to a close, we want to express our heartfelt gratitude and celebrate the collective achievements that we at Central Kentucky Community Action Council (CKCAC) have accomplished in serving our community. It has been a year filled with dedication, teamwork, and impactful service through the many programs that we administer.



Our commitment to enhancing the quality of life for our community members, especially seniors, has been at the forefront of our efforts. Through the collective dedication of our partners, we have successfully navigated the challenges posed by the past year and emerged stronger and more united than ever.

Our Senior Services program has made a significant impact on the lives of our elderly community members. From providing essential transportation services to organizing engaging activities and ensuring access to critical resources, our combined efforts have created a supportive environment for seniors to thrive.

Our transportation services for seniors have been a lifeline, ensuring that they have access to medical appointments, social activities, and essential services. This vital service has been made possible through the dedication and hard work of our team and the seamless collaboration with our community partners.

The Head Start program has continued to be a beacon of hope for our community's youngest members. Through our collaborative efforts, we have provided a foundation for lifelong learning, fostering the growth and development of the children who will shape the future of our community.

The Weatherization program has played a crucial role in creating energy-efficient and sustainable homes for families in need. By working together, we have not only improved living conditions but also contributed to the long-term well-being of our community.

None of these achievements would have been possible without the incredible efforts of our dedicated team. Your hard work, passion, and commitment to our community have been the driving force behind our success. Together, we have proven that when we work as one, we can overcome any challenge and create positive change.

Thank you for your unwavering commitment to the well-being of our community. Here's to another year of success, growth, and making a lasting impact together.

More to come.....Much more

**Hal B. Goode, Executive Director
Central Kentucky Community Action Council**

BOARD CHAIRMAN MESSAGE

As Chairman of CKCAC, I wish to extend our sincere appreciation for your support and partnership in our mission to serve those in need within our community.

Over the past year, CKCAC has continued to focus on providing essential assistance to individuals and families facing economic challenges. The agency's contribution and cooperation has been invaluable in our efforts to support low-income individuals, seniors, and families in various key areas:

1. Senior Programs:

We have made significant strides in addressing food insecurity among the vulnerable Senior populations in our region. Community support has allowed us to expand our meal programs, ensuring that individuals and families have access to nutritious meals.

2. Weatherization:

CKCAC has been able to improve the living conditions of many low-income households by providing weatherization services. These efforts have helped in making homes more energy-efficient, thus reducing utility costs for the families we serve.

3. Head Start & services to families:

Supporting Head Start programs has been instrumental in providing quality early childhood education and comprehensive services to children and families, ensuring they have a strong foundation for future success.

4. Transportation Services:

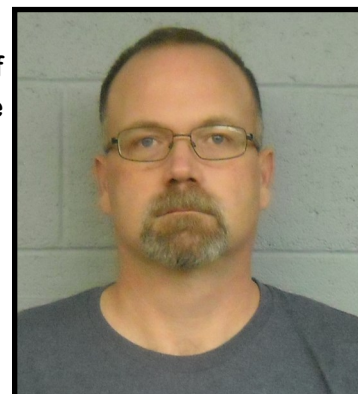
CKCATS continues to be crucial in facilitating transportation services for individuals requiring access to essential resources, education, and employment opportunities.

We acknowledge and deeply appreciate the commitment and dedication all the staff of CKCAC have shown towards the betterment of our community. The impact has been substantial, positively affecting the lives of many individuals in need.

As we look forward to the coming year, we are excited about the prospect of continuing to explore new ways to enhance our services and reach more individuals who require our assistance.

Sincerely,

Andrew Adkins, Board Chairman
Central Kentucky Community Action Council



BOARD OF DIRECTORS

PUBLIC SECTOR DIRECTORS

Judge Maurice Lucas, Breckinridge County

Judge Kevin Henderson, Grayson County

Judge Keith Taul, Hardin County

Judge Blake Durrett, LaRue County—Vice Chairman

Judge David Daugherty, Marion County

Judge Troy Kok, Meade County

Judge Tim Hutchins, Nelson County

Judge Tim Graves, Washington County

PRIVATE SECTOR DIRECTORS

Mr. Andrew Adkins, Breckinridge County—Board Chairman

Mr. Eddie Clemons, Grayson County

Ms. Nancy Addington, Hardin County—Secretary

Ms. Vonda Gray, LaRue County

Mr. John G. Mattingly, Marion County—Treasurer

Mr. Todd Blackburn, Meade County

Ms. Angie Chandler, Nelson County

Ms. Christy Carpenter, Washington County

LOW INCOME REPRESENTATIVES

Ms. Diane Weaver, Breckinridge County

Ms. Cathy Ray, Grayson County

Ms. Brenda Thompson, Hardin County

Open Position, LaRue County

Ms. Jennifer Osborne, Marion County

Ms. Robin Brown, Meade County

Ms. Shelly Lambert, Nelson County

Mr. Roland Youmans, Washington County

HEAD START POLICY COUNCIL REPRESENTATIVES

Ms. Kathy Carey, Washington County

EMERITUS

Mr. Thomas Mahoney, Hardin County

Mr. Joseph Stewart, Marion County Attorney at Hand

**A Special Thanks to
Our Board of Directors
Who Donate Their Time,
Contribute Their
Knowledge and Provide
Ongoing Support to Our
Team's Mission.**



STAFF



Mr. Hal B. Goode
Executive Director



Ms. Jami Sandusky
Assistant Executive
Director & CFO



Ms. Mary Jane Tungate
Human Resources Manager



Ms. Christina Sanders
Human Resources
Assistant



Ms. Kathy Mills
Administrative Assistant



Ms. Jessica Miles
CISO



Ms. Gretta Allen
A/P Supervisor &
Head Start Specialist



Ms. Laney Hall
Payroll Coordinator &
Tax Specialist



Ms. Kathy Isaacs
Finance Assistant



Ms. Amanda Wheatley
Accounts Receivable/
Accounts Payable Clerk



Ms. Ronda Bertrand
Community Collaboration
for Children Director



Ms. Melissa Bland
Retired Seniors Volunteer
Director



Ms. Courtney Campbell
Senior Companion Director



Ms. Ellen Leake
Community Services Block
Grant Director & Agency
Operations Officer



Mr. David Lindsey
Weatherization Director



Ms. Tancy Morris
Congregate Meals Director



Ms. Kathy Hagan
Family Child Care Homes/
Unaffiliated Centers Director



Ms. Tammy Stanley
Head Start Director



Ms. Kerri Taylor
Community Action
Transportation System Director



Mr. Tommy Wheatley
Kentucky Works Director

TEAMWORK MAKES THE DREAM

WORK IN 2022-23



2022-2023 CONTRIBUTORS

Your Generous Donations Help Our Team Make Community Action Work

Abbey of Gethsemani

Amazon Smile

American Online Giving Foundation

Anonymous Donor

Barr Automotive, Inc.

Sue K. Billings DVM

Brinks Home Security

City of Hardinsburg

City of Lebanon

City of Springfield

Community Services, Inc.

Cory & Vivian Cook

Patricia Followell

Bobby Gardner

Grayson County Catholic Outreach

Hardin County Fiscal Court

Karbec, LLC

Kentucky Cooperage Company LP

Knights of Columbus Charity Lebanon, KY

Kroger

LaRue County Fiscal Court

Ellen Leake

Lebanon Lodge No. 87

Leitchfield United Methodist Church

Lincoln National Bank

Louisville Urban League

Meade County Board of Education

Meade County Pediatrics

Mid America Assistance Coalition

Nazareth Literary & Benevolent Institute

Neel Restaurants, LLC

Nelson Christian Church

Nelson County Fiscal Court

Optimist Club

Kara Popham

St. Augustine Catholic Church

St. Monica Church

St. Vincent De Paul Conference of St. Dominic

St. Vincent De Paul Outreach

Salem Baptist Church

Earl Sandusky Sr. & Family

Dr. Brian & Lorraine Scott

Spring View Hospital

Springfield Christian Church

Springfield Presbyterian Church

Talbott Tavern Restaurant and Inn

Think Packaging

Mikayla Thornton

Tri-County United Way

Renee White

Willisburg Church of God

Wilson & Muir Bank & Trust Co.

Woodlawn Baptist Church

FISCAL YEAR HIGHLIGHTS

415 VETERAN
CKCATS TRIPS

183,262
MEALS
WERE
SERVED TO
SENIORS
IN CENTRAL
KENTUCKY

OVER \$2.3M
IN LIHEAP FUNDS
HELPED OFFSET
UTILITY COSTS
FOR
STRUGGLING
FAMILIES

153
UNEMPLOYED
ADULTS OBTAINED
OR RETAINED
EMPLOYMENT
FOR AT LEAST
90 DAYS

84 CHILDREN
RECEIVED BEDS
THROUGH
BUILD-A-BED
PROGRAM

21,788
HOURS
OF SERVICE
DONATED BY
RSVP
VOLUNTEERS

166 LIHWAP
APPLICATIONS
WERE PROCESSED
REPRESENTING
MARION COUNTY
TORNADO RELIEF FUNDS
\$53,500
IN ASSISTANCE

OVER 1500
PRE-SCHOOL AGE CHILDREN
RECEIVED NUTRITIOUS
MEALS AND SNACKS
THROUGH CHILDCARES
SPONSORED BY CKCAC

83,414

CKCATS

TRIPS

WERE

MADE

COVERING

1,440,383

MILES

724

SENIORS

MAINTAINED

AN

INDEPENDENT

LIVING

SITUATION

59

**HOMES WERE
ACCESSED FOR
WEATHERIZATION
SERVICES**

407

PEOPLE

OBTAINED

SAFE AND

AFFORDABLE

HOUSING

834

SENIORS RECEIVED

A SENIOR

COMMODITY BOX

EACH MONTH

551

CHILDREN

**WERE GIVEN AN
ACADEMIC
FOUNDATION
THROUGH
HEAD
START**

13,187

MEAL VOUCHERS

WERE REDEEMED BY

MEADE COUNTY

RESIDENTS

WE ARE ALL

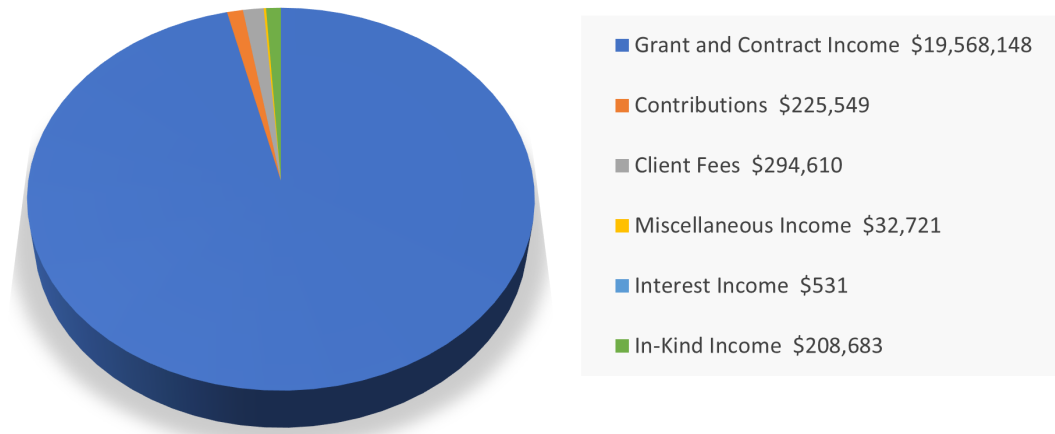
A PIECE

OF THE

PUZZLE

FINANCIAL POSITION & ACTIVITIES FOR FISCAL YEAR ENDING JUNE 30, 2023

Total Revenues, Gains and Other Support



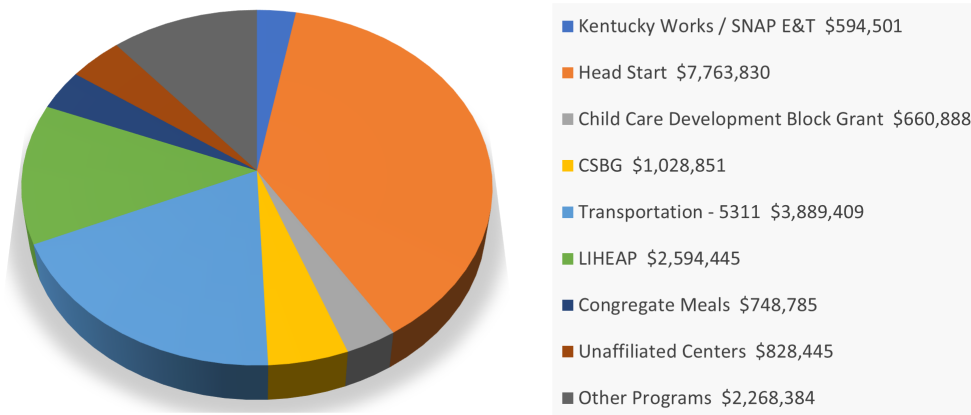
ASSETS

Current Assets	
Cash—Restricted (Note B)	\$ 6,223,096
Grants Receivable (Note C)	\$ 1,934,062
Other Receivables	\$ 405,110
Other Current Assets	\$ 76,789
Total Current Assets	\$ 8,639,057
Land	\$ 703,615
Property and Equipment (Notes A-2 & D)	\$ 17,253,215
Construction in Progress (Note D)	\$ 37,380
Accumulated Depreciation	\$ (5,147,121)
Right-of-Use Asset Net of Accumulated Amortization	\$ 757,233
Total Net Land, Property, and Equipment	\$ 13,604,322
Total Assets	\$ 22,243,379

LIABILITIES & NET ASSETS

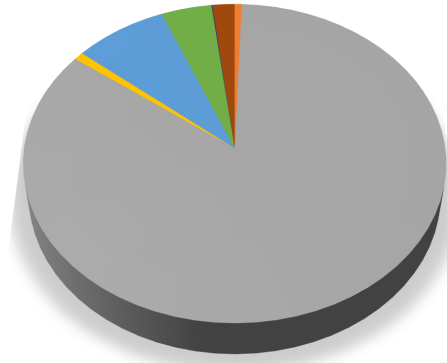
Current Liabilities	
Accounts Payable	\$ 473,278
Accrued Salaries & Wages	\$ 765,241
Accrued Retirement	\$ 169,901
Current Portion of Financing Lease Obligation (Note I)	\$ 30,716
Operating Leases Payable (Note J)	\$ 152,978
Other Liabilities	\$ 341,864
Refundable Advances (Note A-5)	\$ 6,468,573
Total Current Liabilities	\$ 8,402,551
Operating Lease Payable	\$ 604,255
Financing Lease Obligation (Note I)	\$ 130,993
Total Long-Term Liabilities	\$ 735,248
Total Liabilities	\$ 9,137,799
Net Assets	
Without Donor Restrictions	\$ 2,639,974
With Donor Restrictions	\$ 10,465,606
Total Net Assets	\$ 13,105,580
Total Liabilities & Net Assets	\$ 22,243,379

Total Expenses By Program Services



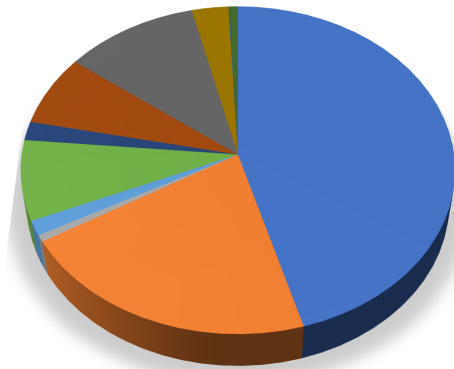
HEAD START & EARLY HEAD START BUDGET

2022 FUNDING BUDGET \$8,438,689



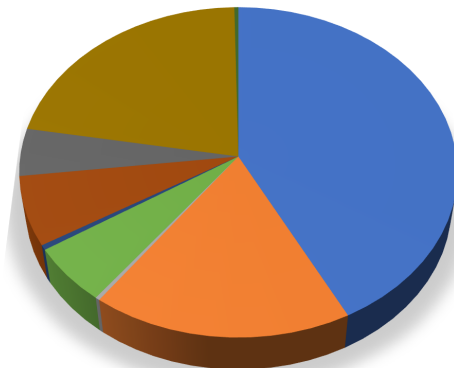
OHS CRRSAA	\$0
OHS ARPA	\$49,220
OHS Continuation Grant	\$7,141,474
OHS Training and Tech Assistance	\$67,144
ARPA KY Sustainability	\$660,888
USDA-CACFP	\$356,749
STARS	\$7,312
Non-Federal Share Match (In-Kind)	\$155,902

2022 Head Start Expenses \$8,040,344



Personnel	\$3,774,289
Fringe Benefits	\$1,735,869
Contractual	\$52,230
Equipment	\$0
Travel & Transportation	\$120,216
Supplies	\$652,017
Non-Federal Share	\$153,594
Indirect Costs	\$582,854
Other	\$906,250
USDA-CACFP	\$247,678
STARS	\$7,312
Training/Tech Assistance	\$55,713
Facilities	\$0

2022 Early Head Start Expenses \$388,536



Personnel	\$210,966
Fringe Benefits	\$87,697
Contractual	\$1,485
Equipment	\$0
Travel & Transportation	\$0
Supplies	\$27,827
Non-Federal Share	\$2,308
Indirect Costs	\$33,532
Other	\$23,099
USDA-CACFP	\$109,071
STARS	\$0
Training/Tech Assistance	\$1,622

HEAD START YEAR OF THE TEAMS



Central Kentucky
Head Start
Central Kentucky Community Action Council

2022-23 has been an exciting year for Central Kentucky Head Start (CKYHS). Unlike many Head Start programs across the nation, CKYHS has been able to stay fully enrolled throughout the pandemic and as we have emerged from it. The team for Central Kentucky Head Start has been committed to the children and families of our area and the results have been shown.

Despite being fully enrolled, Central Kentucky Head Start has struggled to remain fully staffed across all centers and positions. Ms. Tammy Stanley, Director for Head Start and Early Head Start, spent 2022-23 dedicating significant time and resources to strengthening the Head Start Team through the 'Year of the Teams'. Staff hiring, retention, and development have been top priorities this year.

CKYHS has increased staff salaries across the program with a new minimum hourly wage of \$13.73. The CKCAC Board of Directors has approved policies to allow Head Start to offer retention stipends to staff that return each year. Also, CKYHS staff attended over twenty conferences this year to help strengthen our professional knowledge and networks. We can only serve our children and families well when we have a highly motivated and highly trained staff. We will always have room to grow, but Central Kentucky Head Start made huge strides this year.

Staff wellness and mental health has also been a priority this year. All CKYHS staff and their families have access to Starling Minds, which is an online mental health resource funded by the National Head Start Association. All CKYHS staff have been encouraged to take advantage of this incredible opportunity to help improve staff mental health and reduce burnout. We want our team to be as physically and mentally healthy as we can be to provide the best possible experience for our children and families.

Central Kentucky Head Start has invested significant resources in increasing our transportation offerings for children and families. We know that to serve the neediest families in our communities that transportation is essential. Central Kentucky Head Start has created an in-house Commercial Driver's License (CDL) program to help build the pipeline of bus drivers in our program. We are still in need of more bus drivers, so if you know anybody who wants to get paid to train and become a bus driver, please let us know!

Central Kentucky Head Start's mission is to deliver quality education for children and families to be school ready while engaging partnerships and community resources. We seek to fulfill this mission on a daily basis and have rededicated ourselves to this mission this past year. We strive to teach our children, lead our families, and serve our communities in all we do. Please visit our website (www.CKYHS.org) for more information.

Providing the Highest Quality Preschool Education

Preparing children to enter Kindergarten (School Readiness) is the mission of Central Kentucky Head Start. We implement the Frog Street Press curriculum for Head Start and Early Head Start classrooms. Central Kentucky Head Start also implements Conscious Discipline and Second Steps to help children learn how to be members of a classroom environment. All of our curricula are research-based and developmentally appropriate.

All our children are assessed multiple times through the Desired Results Development Profile (DRDP). We also evaluate every classroom multiple times per year with the Classroom Assessment Scoring System (CLASS) to ensure that interactions between children and teaching staff are developmental and scaffolded.

Central Kentucky Head Start has three centers that are National Association for the Education of Young Children (NAEYC) accredited with the other six in process. In the past year, nearly 20 staff members completed the Child Development Associate (CDA) credential. These efforts highlight that Central Kentucky Head Start is committed to providing the highest quality preschool experience to our communities.



Recognizing Parents and Families as Essential

What separates Head Start from other preschool and childcare options? It is our commitment to engaging the whole family in helping children reach their full potential. Central Kentucky Head Start has Family Advocates (FAs) at each center who work with individual families on goal setting as parents and people. FAs share assessment data from the classroom with families and help ensure that all children are healthy and safe.

Our programming for parents and families includes Parent Meetings, Parent University, Nights at the Museum, Literacy Nights, Field Day, and more. In the past year, Central Kentucky Head Start hosted at least 130 events at our centers for families. We also have family representatives from each center as members of our Policy Council. Our parents and families are essential to the shared governance of Central Kentucky Head Start.

Lastly, Central Kentucky Head Start consistently looks for ways to improve communication with our parents and families. Over the past year, we have fully implemented Ready4K, which is a text-based resource and announcement platform. A few times per week, families receive text messages with parenting resources or announcements from their respective centers.

2022-2023

	HEAD START	EARLY HEAD START
TOTAL FUNDED ENROLLMENT	470	24
TOTAL NUMBER OF CHILDREN SERVED	520	37
TOTAL NUMBER OF FAMILIES SERVED	475	37
AVERAGE MONTHLY ENROLLMENT	470	24
PERCENTAGE OF ELIGIBLE CHILDREN SERVED	91%	95%
NUMBER OF CHILDREN RECEIVING DENTAL EXAMS	421	25
NUMBER OF CHILDREN RECEIVING MEDICAL EXAMS	430	27

FAMILY ADVOCACY

Community Collaboration for Children In-Home Program

Community Collaboration for Children (CCC) In-Home focuses on the needs of children and families. Our mission is to educate, empower, and connect families to local resources and supports while promoting a nurturing, stable, and safe home environment. Services are developed that teach problem-solving skills, discuss appropriate discipline skills, assists parents in becoming more self-sufficient, and coordinating available resources. Families complete the Nurturing Parenting curriculum within the 12-week program.

Parent Engagement Meetings

Parent Engagement Meetings (PEMS) target elementary school-aged children to define barriers to attendance, identify strengths and needs, develop a plan of action, and strive to prevent the family from being unnecessarily involved in the child welfare system. It is our intent that this diversion program act as a preventative intervention to reduce referrals to Child Protection Services (CPS) for educational neglect. This service is intended for children who are considered chronically truant (three or more unexcused absences). The PEMS are currently being offered at Marion County Elementary schools in Calvary, Glasscock, Lebanon, and West Marion.

Trail of Hope Regional Network

The Regional Network is comprised of community partners from all areas of the Lincoln Trail region who come together to build awareness and educate communities regarding child abuse and neglect. Additional goals include collaborating within communities, strengthening and supporting families, building parent leadership, and promoting responsible fatherhood.



97%

**OF FAMILIES REPORTED
THEY ARE MAINTAINING
OR IMPROVING ON THE
SKILLS LEARNED WHILE
COMPLETING THE CCC
PROGRAM**



Community Collaboration for Children Partnerships

The CCC Program partners with other groups/agencies to advocate for children and families, including:

Cakes4Kids—Cakes4Kids is powered by a group of volunteers who donate all the ingredients and supplies to bake cakes for the youth in their own homes and then deliver them to our partner agencies who support the youth. We delivered 36 cakes to children for fiscal year ending June 2023.

Build-A-Bed Program—The Trail of Hope Regional Network's Build-A-Bed program was extremely busy getting 84 beds to families. A big thanks to St. Vincent de Paul for making mattresses available for these families.

CHILD NUTRITION

Central Kentucky Community Action Council Teams up with the Child & Adult Care Food Program as a Sponsor to Ensure Children are Well Nourished in Kentucky's Family Child Care Homes & Unaffiliated Centers

Central Kentucky Community Action Council (CKCAC) is a proud sponsor of the Child and Adult Care Food Program (CACFP). CACFP is a federal program designed to ensure nutritious meals and snacks are being served to children and adults in the care of approved child-care centers, daycare homes and adult daycare centers. CACFP continually updates its nutrition standards in conjunction with the USDA meal patterns and the Department of Agriculture's dietary guidelines.

Central Kentucky Community Action Council sponsors 21 Family Child Care Homes (FCCH) and 24 Unaffiliated Centers (UC) in Central Kentucky and beyond for a total of 19 counties. As a CACFP sponsor, CKCAC provides training and support to approved child-care homes and centers, reviews monthly food reports for accuracy, and conducts monitoring visits to ensure the homes/centers have the most up-to-date information and the required CACFP guidelines are being met.

Central Kentucky Community Action sees the CACFP as a win-win-win program because it benefits the children, the childcare homes/centers, and the parents/guardians:

First, the children are exposed to nutritious food choices which contribute to their health, growth, and wellbeing, while creating good eating habits they can take with them into adulthood.

Secondly, childcare homes/centers receive monthly reimbursements based on child eligibility and meals served which helps to keep their food costs down, while allowing them to advertise as a childcare provider of CACFP meal plans.

Thirdly, the parents/guardians benefit by having healthier children because of the CACFP nutritious meals, as well as lower daycare costs because the homes/centers are receiving reimbursements to help offset the rising food costs, especially following the recent pandemic.

It's a winning program for all involved, but especially the children!



CACFP has required meal components for Breakfast, Lunch/Dinner and Snacks. The picture above from one of CKCAC's sponsored Family Child Care Homes is a good example of the nutritious components being served to a 3 year old who also happens to be raised in a vegetarian household:

Fluid Milk: 6 oz. 1% Milk

Meat/Alt.: 3 Tbsp. Nut Butter with Chia Seeds for added protein

Vegetable: ¼ Cup Fresh Celery Stalks

Vegetable/Fruit: ¼ Cup Fresh Plum

Grains: 2 Whole Grain Slices of Bread



Home Energy

Our Award Winning Weatherization Team is at Work for the Clients We Serve

The CKCAC Weatherization Assistance Program (WAP) closed out the fiscal year with 24 Dwellings Completed, 2 Dwellings In-Progress, 29 Dwellings Deferred,* and 4 Dwellings Cancelled by the client before services could be completed. Below are the final number of clients who have received services during the 2022-2023 program year, along with a breakdown of expenditures in each of our 8-county service area:

COUNTY	# JOBS	TOTAL DOLLARS	PERCENTAGE
BRECKINRIDGE	5	\$34,500.58	14%
GRAYSON	7	\$34,709.76	14%
HARDIN	6	\$6,080.35	2%
LARUE	4	\$23,760.01	10%
MARION	7	\$55,871.72	23%
MEADE	16	\$38,404.29	16%
NELSON	11	\$52,857.43	21%
WASHINGTON	3	\$638.54	0.26%
	59	\$246,822.68	

*Deferred Dwellings are those which require work outside of the allowable cost set forth by the US Department of Energy and were referred to other resources and/or programs. Once deficiencies of the dwelling are resolved, the dwelling will become eligible for weatherization services.

CKCAC'S Weatherization Assistance Program (WAP) received a certificate as *The WAP Agency* that maintained the average job cost closest to the maximum allowed average job costs as mandated by the US Department of Energy.



CKCAC Weatherization Assistance Program (WAP) leveraged funding from the US Department of Energy (DOE), the DOE Bipartisan Infrastructure Law (BIL), and the Low-Income Home Energy Assistance Program (LIHEAP). During the 2022-2023 fiscal year, CKCAC's WAP expended 81% of DOE funding, which is commensurate to the 84% state average. CKCAC's WAP also leverages funding from utilities to expand the reach of the Weatherization Assistance Program, such as East Kentucky Power, Kentucky Utilities, and Louisville Gas & Electric.

CKCAC's WAP is fully staffed with a highly trained technical and supporting staff consisting of Denny Baxter—Dwelling Needs Evaluator EA/QCI, Josh Mattingly—Crew Leader, Mike Burden—Retrofit Installer, Seth Riggs—Retrofit Installer, and Barbara Garrett—WAP Administrative Support Specialist. We would like to say a huge thank you to the WAP staff for their commitment to improving the quality of work they perform and their dedication to ensure the health and safety of all the clients we serve. CKCAC's WAP also utilizes contractors to perform HVAC and electrical work that must be completed at the dwellings receiving services.

The goal for CKCAC's WAP is to continue to improve energy efficiency and assure the health and safety of each client we serve through testing that includes: aliening air and thermal boundaries, pressure diagnostics, heating system diagnostics, indoor air quality, and base load energy consumption diagnostics. We look forward to the future of the new contract year of CKCAC's Weatherization Assistance Program to progress and better serve our 8-county service area.

LIHEAP

SUMMER COOLING SUBSIDY (JULY-SEPT.)

1,612 FAMILIES
\$519,800 AWARDED

SUMMER COOLING CRISIS (JULY-SEPT.)

639 FAMILIES
\$136,368 AWARDED

FALL SUBSIDY (NOV.-DEC.)

3,281 FAMILIES
\$416,371 AWARDED

CRISIS (JAN.-APR.)

4,242 FAMILIES
\$953,248 AWARDED

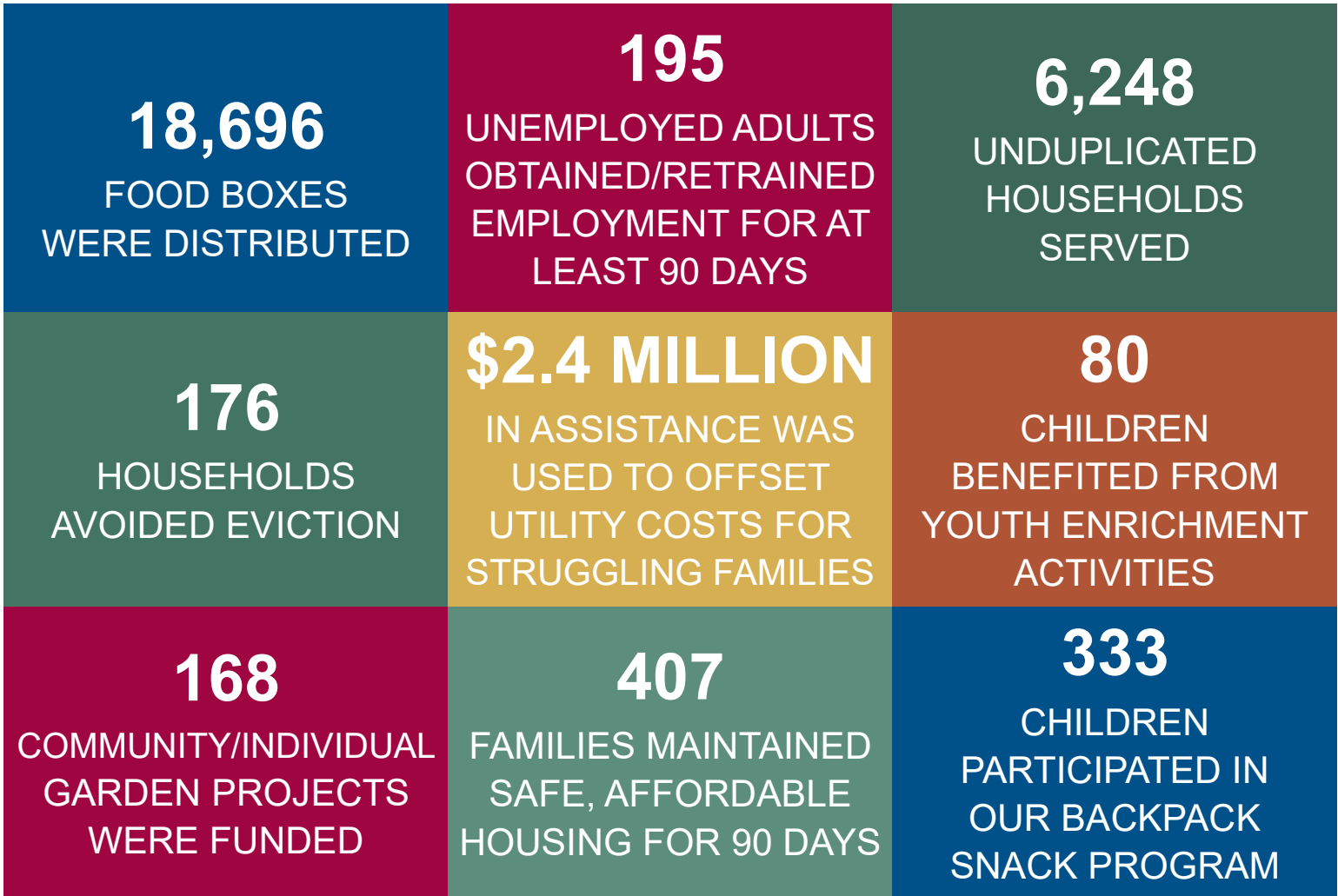
SPRING SUBSIDY (MAY-JUNE)

2,032 FAMILIES
\$280,811 AWARDED

COMMUNITY SERVICES

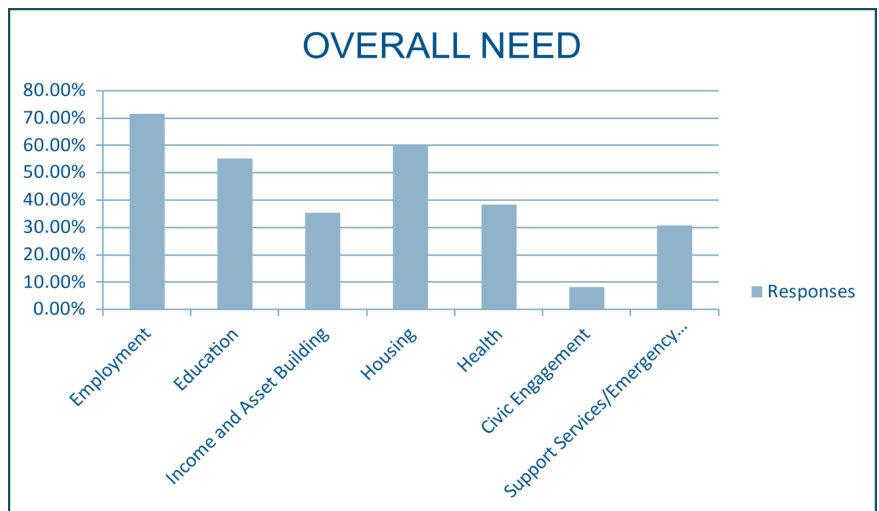
The Community Services Block Grant (CSBG) program continues its services to the community. From being an immediate emergency assistance provider to becoming a program that helps the low-income families change their lives, CSBG is playing an integral role. Although we continue to provide emergency assistance, we also assist with budgeting, developing family goal plans, and strategies to avoid future emergencies. As we work with families to develop strategies to prevent future emergencies, tips such as budget billing, paying your rent first, shopping at less expensive stores, and controlling impulsive spending are helpful and sometimes well received. Those not working are encouraged to find employment. Our employment and education programs can assist with small barriers to gaining full time employment or better employment. How do we help? It can be partial assistance with a CNA, CDL class, or proper clothing and shoes for a new job, and gas for transportation to work for a week.





Community Needs Assessment

Central Kentucky Community Action’s annual community-wide needs assessment provides our team with input from local residents to help us better gauge the needs of the community going forward. Based on this year’s survey, the top five areas of need are Housing, Employment, Education, Health and Income/Asset Building. The chart indicates the percentages for each. This information will enable us to cater our programs to better suit the community needs in the new fiscal year.



EMPLOYMENT



Kentucky Works Program

The Kentucky Works Program supports the Kentucky Transitional Assistance Program (K-TAP) and Supplemental Nutrition Assistance Program (SNAP) in the following Kentucky counties: Anderson, Breckinridge, Bullitt, Franklin, Grayson, Hardin, Henry, LaRue, Marion, Meade, Nelson, Oldham, Shelby, Spencer, Trimble, Washington, and Woodford. Our goal is to assess referred individuals to identify barriers, help them work toward overcoming those barriers, and ultimately help them to become self-sufficient. We also have job readiness classes to help with resumes, job search, job interviews, etc.

During this Fiscal year, we received 235 referrals for the KTAP program. This number was up from 26 in the last fiscal year when Covid was having a big impact on our program. We placed 54 of these clients in work preparation activities with the majority of these doing volunteer hours to gain needed work experience. Our Employment Specialists continue to follow up with these clients and track their hours to make sure they are successful. After helping our clients overcome barriers, we were able to place 86 in unsubsidized job placement which helped put them on the way to self-sufficiency.

On the SNAP Employment and Training Program we continue to reach out to these clients and complete assessments when they are referred to us. We had 1,259 referrals for the SNAP program during the last fiscal year. This is up from the 250 referrals we had for the last fiscal year.

We continually work with employers in our area to make sure we have the right job opportunities for our clients when they are ready to make that move, and keep a current job listing in each of the counties we serve. We also work with our non-profit agencies in each of our counties to make sure we have an adequate number of job sites that are willing to take our clients to give them work experience to help them become self-sufficient.

We continue to offer a wage subsidy program where the employer will be reimbursed for a portion of their wages during their first six months of employment if they hire one of our KTAP clients.



TEAMWORK LEADS TO SUCCESS

TRANSPORTATION

Community Transportation

Community Action Transportation System (CATS) provides many trips and serves the community's transportation needs. CATS is in high demand! We have a team of dedicated, hardworking drivers and office staff to keep up with the workload. The efforts of these drivers are crucial in ensuring that people have access to transportation services, particularly those who may have limited mobility or lack access to private transportation options.

Transportation services like CATS play an important role in connecting individuals with essential services such as medical appointments, grocery shopping, work, and social activities. The commitment and hard work of the drivers contribute significantly to the overall functioning and success of the transportation system.

Intercity Transportation

Central Kentucky Community Action Transportation System (CKCATS) offers public transportation services to get you to and from the bus depots or airports in Kentucky from any of our five-county area offices, including Breckinridge, Grayson, LaRue, Marion and Nelson counties for a low price of \$10 per person for a one-way trip. This is an incredible service for those who love to travel! Call our staff at 1-800-242-8225 or 270-692-9313 to schedule your intercity trip today!

Driver Appreciation

It's essential to recognize and appreciate the efforts of the CATS staff who dedicate their time and energy to ensure that people in the community can reach their destinations safely and reliably. Their hard work is instrumental in maintaining a well-functioning transportation system.



CKCATS Team Wins Awards

Congratulations to our CKCATS Department on winning the **Most Efficient Award for Lowest Cost Per Mile for 2023**. We also congratulate Nelson County driver **Melissa Tonge** for receiving an award for **Driver of the Year for 2023**. We appreciate our CKCATS team for their hard work and dedication throughout 2022-2023.



Join Our CKCATS Team

Due to the demand for transportation, CATS continues to consider various strategies to recruit and retain drivers. These strategies include offering competitive compensation, providing additional training, and creating a supportive and inclusive work environment.

If you or anyone you know would like to join the staff at CKCATS, please go to careers@ckcac.org to apply. CKCATS is hiring full-time and part-time drivers in Marion, LaRue, Hardin, Nelson, Breckinridge, and Grayson counties.

83,414
TRIPS

457 SENIORS
ENROLLED IN SENIOR
TRANSPORTATION PROGRAM

1,440,383
MILES

16,770 SENIOR
CITIZEN TRIPS

2,072 INTERCITY
CONNECTION TRIPS

415
VETERAN TRIPS

SENIOR SUPPORT

Senior Companion Program-Volunteers

The dual purpose of the Senior Companion Program (SCP) is to create a volunteer community service opportunity for low-income seniors aged 55 and over and to provide assistance to elderly citizens so that they can remain independent in their homes by providing much needed support. The Senior Companion Program serves six counties, which includes Breckinridge, Grayson, Hardin, Marion, Nelson, and Washington. SCP currently has 18 active volunteers ranging from ages 56 to 89. During fiscal year 2022-2023, there were over 20,000 hours volunteered by our Senior Companion Program.



Retired & Senior Volunteer Program

The Retired and Senior Volunteer Program (RSVP) began as an outgrowth by private groups and government agencies to create opportunities of engagement, activity, and growth for older Americans following the work of the Community Service Society of New York on Staten Island beginning in 1965; the Society's success led to the Older Americans Act being amended to create RSVP as a nationwide program in 1969.

RSVP volunteers must be 55 and older and willing to volunteer in Hardin or Nelson County. RSVP volunteers are a vital part of helping non-profits serve their communities.

Our wonderful 95 RSVP volunteers donated 21,788 hours from July 1, 2022, through June 30, 2023!

Congregate Meals Program Continues to Serve In-Person and Drive-Thru Meals

The Congregate Meals Program provides free, hot, nutritious meals Monday through Friday in ten senior centers located in the Lincoln Trail area for senior citizens who are age 60 or older. A 24-hour advance notice is required to reserve a meal. **From July 1, 2022 – June 30, 2023, we served 183,252 Congregate meals to 869 unduplicated clients.**

Meade County Seniors were offered a local restaurant voucher since Congregate meals have not always been available in their area. **From July 1, 2022 – June 30, 2023, 13,187 vouchers were used to redeem meals at Home Plate in Brandenburg by 448 unduplicated participants.** The Meade County Senior Center has now reopened and is serving meals.

Below is a breakdown of how many meals were served and how many vouchers were given to clients:

CENTERS	MEALS	CLIENTS
Bardstown	20,997	212
Bradfordsville	688	19
Grayson	5,543	77
Griffin Manor	8,293	67
Breckinridge	5,682	49
LaRue	7,795	103
Lebanon	21,371	206
New Haven	950	12
Radcliff	5,087	58
Washington	6,846	72
CENTER	VOUCHERS	CLIENTS
Meade	13,187	448



OFFICE LOCATIONS

CENTRAL OFFICE

MARION COUNTY

Administration / Community Services Block Grant /
Congregate Meals / Family Child Care Homes &
Unaffiliated Centers / Head Start / Senior
Companion / Weatherization
332 Hood Avenue / PO Box 830
Lebanon, KY 40033
(270) 692-2136

CENTRAL KENTUCKY COMMUNITY ACTION TRANSPORTATION SERVICES (CKCATS) LOCATIONS*

BRECKINRIDGE COUNTY*

189 Ball Park Road
Hardinsburg, KY 40143
(800) 242-8225

GRAYSON COUNTY*

102 B Watkins Woods Drive
Leitchfield, KY 42754
(800) 242-8225

LARUE COUNTY*

80 Phillips Lane
Hodgenville, KY 42748
(800) 242-8225

MARION COUNTY*

328 Hood Avenue / PO Box 830
Lebanon, KY 40033
(800) 242-8225 / (270) 692-9313

NELSON COUNTY*

122 Plaza Drive
Bardstown, KY 40004
(800) 242-8225

*Limited Services in Hardin, Meade & Washington
Counties

*Medicaid, Medicare, General Public & Intercity
Transportation

COMMUNITY COLLABORATION FOR CHILDREN (CCC)* LOCATIONS

NELSON COUNTY

830 Pennsylvania Avenue
Bardstown, KY 40004
(270) 692-7553
*Also serves Breckinridge, Grayson, Hardin,
LaRue, Marion, Meade & Washington Counties

COMMUNITY SERVICES BLOCK GRANT (CSBG) LOCATIONS

BRECKINRIDGE COUNTY

189 Ball Park Road
Hardinsburg, KY 40143
(270) 756-6813

GRAYSON COUNTY

118 William Thomason Byway
Leitchfield, KY 42754
(270) 259-3500

HARDIN COUNTY

233 Ring Road, Suite 100
Elizabethtown, KY 42701
(502) 764-2220

LARUE COUNTY

80 Phillips Lane
Hodgenville, KY 42748
(270) 358-3937

MARION COUNTY

340 Hood Avenue / PO Box 830
Lebanon, KY 40033
(270) 692-6411

MEADE COUNTY

496 East Broadway
Brandenburg, KY 40108
(270) 422-2545

NELSON COUNTY

830 Pennsylvania Avenue
Bardstown, KY 40004
(502) 348-9596

WASHINGTON COUNTY

394 Lincoln Drive, Suite 2
Springfield, KY 40069
(859) 336-7766

CONGREGATE MEALS / SENIOR CENTERS

BRECKINRIDGE COUNTY

205 Fairgrounds Road
Hardinsburg, KY 40143
(270) 756-5668

GRAYSON COUNTY

102 B Watkins Woods Drive
Leitchfield, KY 42754
(270) 259-4885

HARDIN COUNTY

1119 Johnstown Road
Elizabethtown, KY 42701
(270) 982-2909

230 Freedom's Way

Radcliff, KY 40160
(270) 351-4079

LARUE COUNTY

112 North Walters Avenue
Hodgenville, KY 42748
(270) 358-4235

MARION COUNTY

100 West Mulberry Street
Lebanon, KY 40033
(270) 692-6591

115 South 6th Street

Bradfordsville, KY 40009
(270) 692-6591

MEADE COUNTY

1200 Old Ekron Road
Brandenburg, KY 40108
(270) 750-8321 (Temporary)
(270) 998-1041

NELSON COUNTY

122 Plaza Drive, Suite A
Bardstown, KY 40004
(502) 348-1888

WASHINGTON COUNTY

206 Main Cross Street
Springfield, KY 40069
(859) 336-0909

HEAD START LOCATIONS

HARDIN COUNTY

Elizabethtown Head Start

401 West Poplar Street
Elizabethtown, KY 42701
(270) 900-4831

Radcliff Head Start

788 South Wilson Road
Radcliff, KY 40160
(270) 390-4202

LARUE COUNTY

LaRue County Head Start

407 Miami Court
Hodgenville, KY 42748
(270) 358-3335

MARION COUNTY

Lebanon Head Start & Early Head Start

1081 Corporate Drive
Lebanon, KY 40033
(270) 692-4291

West Main Head Start

356 West Main Street
Lebanon, KY 40033
(270) 692-9966

MEADE COUNTY

Meade County Head Start & Early Head Start

6215 Brandenburg Road
Ekron, KY 40117
(270) 828-4417

NELSON COUNTY

Bardstown Head Start

820 Pennsylvania Avenue
Bardstown, KY 40004
(502) 348-9240

Family Enrichment Center

830 Pennsylvania Avenue
Bardstown, KY 40004
502-331-0055

New Haven Head Start

413 North First Street
New Haven, KY 40051
(502) 549-3786

WASHINGTON COUNTY

Springfield Head Start & Early Head Start

394 Lincoln Drive, Suite 1
Springfield, KY 40069
(859) 481-6166

KENTUCKY WORKS*

BRECKINRIDGE COUNTY

Kentucky Works*

189 Ball Park Road
Hardinsburg, KY 40143
(270) 580-4160

*Also serves Grayson & Meade Counties

FRANKLIN COUNTY

Kentucky Works*

73C Michael Davenport Blvd. #1
Frankfort, KY 40601
(502) 803-3133

*Also serves Anderson & Woodford Counties

HARDIN COUNTY

Kentucky Works

950 Mulberry, Suite 260
Elizabethtown, KY 42701
(270) 769-0908

LARUE COUNTY

Kentucky Works*

80 Phillips Lane
Hodgenville, KY 42748
(270) 692-7044

*Also serves Bullitt County

NELSON COUNTY

Kentucky Works*

830 Pennsylvania Avenue
Bardstown, KY 40004
(502) 331-3275

*Also serves Marion, Spencer & Washington Counties

SHELBY COUNTY

Kentucky Works*

229 Alpine Drive
Shelbyville, KY 40065
(502) 633-1199

*Also serves Henry, Oldham & Trimble Counties

RETIRED SENIORS VOLUNTEER PROGRAM (RSVP) LOCATION*

HARDIN COUNTY

(Located in Griffin Manor)

1119 Johnstown Road*
Elizabethtown, KY 42701
(270) 737-1059

*Also serves Nelson County

WEATHERIZATION LOCATION*

GRAYSON COUNTY

118 William Thomason Byway
Leitchfield, KY 42754
(270) 259-0021

*Also serves Breckinridge, Hardin, LaRue, Marion, Meade, Nelson & Washington Counties



Pictured: Central Kentucky Community Action Council's Central Office located in Marion County.

P.O. BOX 830, 332 HOOD AVENUE, LEBANON, KENTUCKY 40033 / TEL: (270) 692-2136 / FAX: (270) 692-4530 / CKCAC.ORG

THANK YOU!

Thank You to Our Sponsor for
Supporting the CKCAC Team



**Spring View
Hospital**

